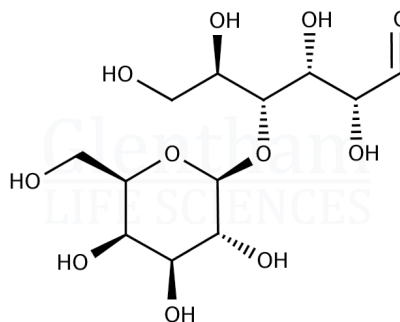


Product Specification

Product Name	Lactose, anhydrous, Ph. Eur., USP grade
Glentham Code	GC1111
CAS Number	63-42-3
EINECS	200-559-2
MDL Number	MFCD00151251
Additional CAS	64044-51-5
Additional CAS	10039-26-6
Additional CAS	14641-93-1
Additional CAS	5989-81-1

Molecular Weight	342.30
Molecular Formula	C ₁₂ H ₂₂ O ₁₁
Storage Temp.	+20°C



Property	Specification
Physical Description	White or almost white crystalline powder
Identification	According to Ph. Eur., USP
Solubility (10% in water)	Clear, colourless solution (boiling water)
Acidity or Alkalinity	≤ 0.4ml (of 0.1M NaOH)
Specific Optical Rotation	+54.4 - +55.9 ° (anhydrous substance)
Absorbance	≤ 0.04 (400nm)
	≤ 0.07 (270 - 300 nm)
	≤ 0.25 (210 - 220 nm)
Heavy Metals	≤ 5ppm
Water	≤ 1.0%
Loss on Drying	≤ 0.5%
Residue on Ignition	≤ 0.1%
Total Aerobic Microbial Count	≤ 100CFU/g
Total Combined Yeast and Mould Count	≤ 50CFU/g
E. Coli	Abent in 10g
Salmonella	Abent in 10g
alpha-Lactose	Reported
beta-Lactose	Reported
Content (GC)	≥ 99.5% (alpha + beta)
Pharmacopoeia Specification(s)	Conforms to Ph. Eur., USP

Specification Version	-	v1.0
Date Created	-	2016-12-01

Glentham Life Sciences confirm that the above referenced product conformed to the information displayed in this document on the quality release date. Please check www.glentham.com or contact us using the details above for the current version of this document.

This document was generated electronically and is therefore valid without signature. © Glentham Life Sciences Ltd, 2024