

## Product Datasheet

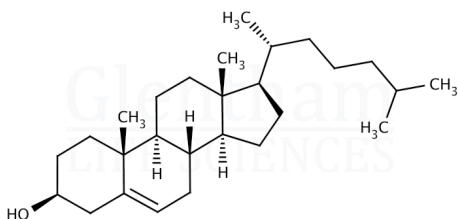
### GE7110 - Cholesterol, non-animal origin

#### Product Details

Product Name	Cholesterol, non-animal origin
Glentham Code	GE7110
CAS Number	57-88-5
EINECS	200-353-2
MDL Number	MFCD00003646
Related Categories	Biochemicals, Reagents for Cell Culture

#### Structure

Molecular Weight	: 386.66
Molecular Formula	: $C_{27}H_{46}O$



#### Storage

Recommended storage temperature: +4°C.

#### Hazards and Transport

Not classified as hazardous under CLP.  
Not classified as dangerous for transport.

#### Glentham Product Specification

Physical Description	: White to almost white crystalline powder
Melting Point	: 147 - 150 °C
Identification	: TLC
	: Test C according to EP
Specific Optical Rotation	: -43.0 - -39.0 ° (c=2, CHCl <sub>3</sub> )
Solubility (1% in ethanol)	: Clear solution (2h, 50°C)
Acidity	: ≤ 0.3ml
Sulphated Ash	: ≤ 0.1%
Heavy Metals	: ≤ 10ppm
Loss on Drying	: ≤ 0.3% (4h, 60°C)
Total Aerobic Microbial Count	: ≤ 100CFU/g
Mould and Yeast	: ≤ 100CFU/g
Endotoxins	: ≤ 1.0EU/mg
Assay	: ≥ 99.0% (cholesterol, dried basis)
Pharmacopoeia Specification(s)	: EP
Source	: Vegetal
Version	: v1.0

#### About Cholesterol, non-animal origin

No further details on record.

This document was generated electronically and is therefore valid without signature. © Glentham Life Sciences Ltd, 2024