

Product Datasheet

GK8620 - D(+)-Lactose monohydrate

Not classified as dangerous for transport.

Product Details

| | |
|--------------------|---|
| Product Name | D(+)-Lactose monohydrate |
| Glenthams Code | GK8620 |
| CAS Number | 64044-51-5 |
| EINECS | 200-559-2 |
| MDL Number | MFCD00166994 |
| Additional CAS | 10039-26-6 |
| Additional CAS | 14641-93-1 |
| Additional CAS | 5989-81-1 |
| PubChem SID | 310275680 |
| Additional CAS | 63-42-3 (anhydrous) |
| Related Categories | Carbohydrates, Core Carbohydrates, Biochemicals, Raw Materials (IVD), Oligosaccharides |

Glenthams Product Specification

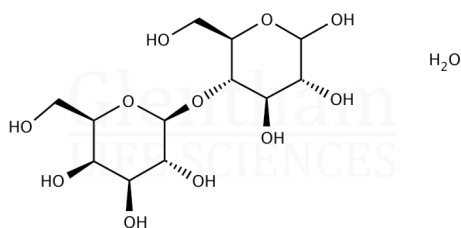
| | |
|---------------------------|--|
| Physical Description | : White to almost white powder |
| Solubility (10% in water) | : Clear, colourless solution |
| pH (10% in water) | : 4.5 - 7.0 |
| Residue on Ignition | : $\leq 0.5\%$ |
| Free Water | : $\leq 0.5\%$ |
| Purity | : $\geq 99.0\%$ (C ₁₂ H ₂₂ O ₁₁ · H ₂ O) |
| Version | : v1.1 |

About D(+)-Lactose monohydrate

No further details on record.

Structure

Molecular Weight : 360.32
Molecular Formula : C₁₂H₂₂O₁₁ · H₂O



Storage

Recommended storage temperature: +20°C.

Hazards and Transport

Not classified as hazardous under CLP.

This document was generated electronically and is therefore valid without signature. © Glenthams Life Sciences Ltd, 2024