

## Product Datasheet

### GT2874 - Bromophenol Blue

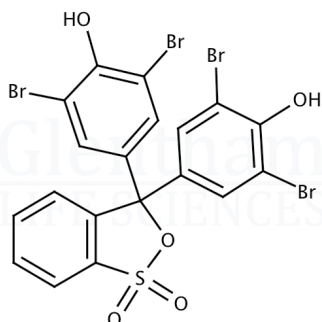
#### Product Details

Product Name	Bromophenol Blue
Glenthams Code	GT2874
CAS Number	115-39-9
EINECS	204-086-2
MDL Number	MFCD00005875
PubChem SID	310268950
Related Categories	Biochemicals, Dyes & Stains, Organics, Phenols

Physical Description	: Dark beige to dark orange powder
pH Transition Range	: 3.1 - 4.6 (greenish yellow to blue-violet)
Solubility	: 0.1% in 95% ethanol: Clear solution
Wavelength of Maximum Absorption	: 434 - 439 nm (pH 3.1)
	: 590 - 593 nm (pH 4.6)
Absorptivity (E1%, 1cm cell)	: 350 - 385 (pH 3.1, Lambda 1 max)
	: 940 - 1000 (pH 4.6, Lambda 2 max)
Loss on Drying	: ≤ 1.0%
Version	: v1.0

#### Structure

Molecular Weight : 669.98  
Molecular Formula :  $C_{19}H_{10}Br_4O_5S$



#### About Bromophenol Blue

No further details on record.

#### Storage

Recommended storage temperature: +20°C.

#### Hazards and Transport

Not classified as hazardous under CLP.  
Not classified as dangerous for transport.

#### Glenthams Product Specification

This document was generated electronically and is therefore valid without signature. © Glenthams Life Sciences Ltd, 2024