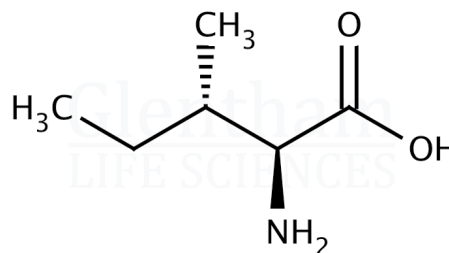


Certificate of Analysis

Product Name L-Isoleucine
Glentham Code GM6591
CAS Number 73-32-5
EINECS 200-798-2
MDL Number MFCD00064222
PubChem SID 310275405
Batch Number 650EXH

Molecular Weight 131.18
Molecular Formula $C_6H_{13}NO_2$
Storage Temp. +20°C



Property	Specification	Batch 650EXH
Physical Description	White to off-white powder or crystals	White crystalline powder
Identification (IR)	To conform to standard	Conforms
pH (1% in water)	5.5 - 7.0	5.8
Specific Optical Rotation ($[\alpha]_{20/D}$)	+38.9 - +41.8 ° (C=4, 6M HCl)	+39.3°
Residue on Ignition	≤ 0.3%	0.11%
Loss on Drying	≤ 0.3%	0.13%
Chloride (Cl)	≤ 500ppm	≤ 200ppm
Iron (Fe)	≤ 30ppm	≤ 10ppm
Sulphate (SO ₄)	≤ 300ppm	Conforms
Ammonium (NH ₄)	≤ 200ppm	Conforms
Heavy Metals	≤ 10ppm	Conforms
Lead (Pb)	≤ 3ppm	Conforms
Arsenic (As ₂ O ₃)	≤ 1ppm	Conforms
Cadmium (Cd)	≤ 1ppm	Conforms
Mercury (Hg)	≤ 0.1ppm	Conforms
Assay	98.5 - 101.0 %	99.7%
Pharmacopoeia Specification(s)	USP	Conforms

Specification Version v1.1
Manufacture Date 2021-06-10
Re-Test Date 2029-09-29

Glentham Life Sciences confirm that the above referenced product conformed to the information displayed in this document on the quality release date. Please check www.glentham.com or contact us using the details above for the current version of this document.

This document was generated electronically and is therefore valid without signature. © Glentham Life Sciences Ltd, 2024