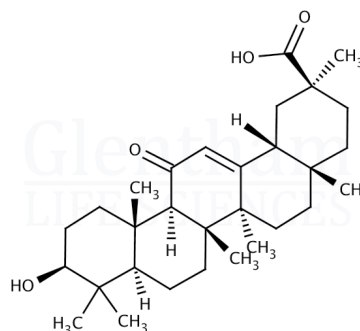


## Certificate of Analysis

Product Name Enoxolone  
Glentham Code GP8041  
CAS Number 471-53-4  
EINECS 207-444-6  
MDL Number MFCD00003706  
PubChem SID 310272560  
Batch Number 310AEF

Molecular Weight 470.68  
Molecular Formula  $C_{30}H_{46}O_4$   
Storage Temp. +20°C



Property	Specification	Batch 310AEF
Physical Description	White or almost white crystalline powder	Almost white powder
Identification	A, B, C according to EP	Conforms
Solubility (1% in ethanol)	Clear, colourless solution	Clear, colourless solution
Specific Optical Rotation	+145 - +154 °	+153.8°
Any Individual Impurity	≤ 0.7%	0.4%
Total Impurities	≤ 2.0%	0.8%
Heavy Metals	≤ 20ppm	Conforms
Sulphated Ash	≤ 0.2%	0.04%
Loss on Drying	≤ 0.5%	0.4%
Assay	98.0 - 101.0 % (dried basis)	100.1%
Pharmacopoeia Specification(s)	EP	Conforms

Specification Version v1.0  
Manufacture Date 2022-05-07  
Re-Test Date 2029-07-11

Glentham Life Sciences confirm that the above referenced product conformed to the information displayed in this document on the quality release date. Please check [www.glentham.com](http://www.glentham.com) or contact us using the details above for the current version of this document.

This document was generated electronically and is therefore valid without signature. © Glentham Life Sciences Ltd, 2024