

## Product Datasheet

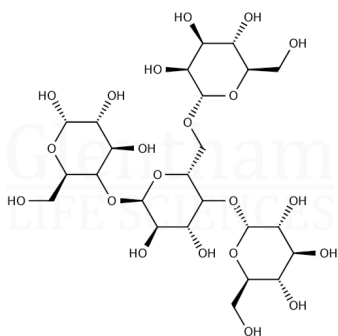
### GC1413 - Glycogen, from plant

#### Product Details

Product Name	Glycogen, from plant
Glentham Code	GC1413
CAS Number	9005-79-2
EINECS	232-683-8
MDL-Nummer	MFCD00081547
Related Categories	Carbohydrates, Polysaccharides

#### Structure

Molecular Weight	: (162.14) <sub>n</sub>
Molecular Formula	: (C <sub>6</sub> H <sub>10</sub> O <sub>5</sub> ) <sub>n</sub>



#### Storage

Recommended storage temperature: +4°C.

#### Hazards and Transport

Not classified as hazardous under CLP.  
Not classified as dangerous for transport.

#### Glentham Product Specification

Physical Description : White powder

Identification	: To pass test
Solubility (1% in water)	: Milky-opalescent solution
Loss on Drying	: ≤ 8.0% (105°C, 5h)
Purity	: ≥ 98.0% (dried basis)
Source	: Sweetcorn
Version	: v1.1

#### About Glycogen, from plant

Glycogen is a branched polysaccharide of glucose, used biologically as a store of energy in animals, fungi and bacteria. It is an analogue of starch, which carries out a similar energy storage function in plants. Our glycogen is used in physiology and nutritional studies as well as general biochemistry research applications. Our product GC1413 is of vegetal (non-animal) origin.

This document was generated electronically and is therefore valid without signature. © Glentham Life Sciences Ltd, 2025