

Product Datasheet

GK4022 - Pantoprazole sodium hydrate

Pictograms

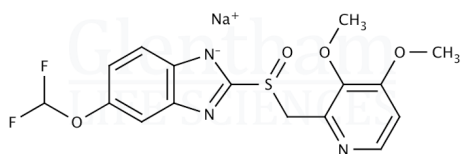


Product Details

Product Name	Pantoprazole sodium hydrate
Glentham Code	GK4022
CAS Number	718635-09-7
Zusätzliche CAS	164579-32-2
Zusätzliche CAS	138786-67-1 (anhyd.)
Zusätzliche CAS	102625-70-7 (base)
Related Categories	APIs

Structure

Molecular Weight	: 405.35 (anhydrous)
Molecular Formula	: $C_{16}H_{14}F_2N_3O_4S \cdot Na \cdot xH_2O$



Glentham Product Specification

Physical Description	: White to off-white powder
Identification	: According to USP
Heavy Metals	: ≤ 20ppm
Organic Impurities	: Compound A: ≤ 0.20%
	: Compound B: ≤ 0.15%
	: Compound C: ≤ 0.10%
	: Compounds D + F: ≤ 0.20%
	: Any Other Impurity: ≤ 0.10%
	: Total impurities: ≤ 0.5%
Water	: 5.0 - 8.0 %
Assay	: 98.0 - 102.0 % (anhydrous basis)
Pharmacopoeia Specification(s)	: USP
Version	: v1.0

About Pantoprazole sodium hydrate

No further details on record.

Storage

Recommended storage temperature: -20°C.

Hazards and Transport

Not classified as dangerous for transport.

CLP Classification	Acute Tox. 4
Signal Word	Achtung
Hazard Codes	H302
Precautionary Codes	P280, P301+P312

This document was generated electronically and is therefore valid without signature. © Glentham Life Sciences Ltd, 2025