

## Product Datasheet

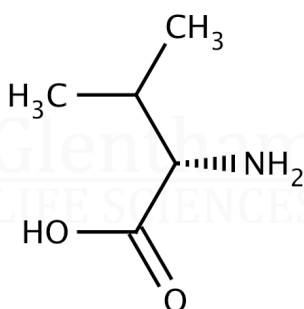
### GM6473 - L-Valine

#### Product Details

Product Name	L-Valine
Glentham Code	GM6473
CAS Number	72-18-4
EINECS	200-773-6
MDL-Nummer	MFCD00064220
PubChem SID	310281625
Related Categories	Amino Acids, Biochemicals, Reagents for Cell Culture, Cosmetic Raw Materials

#### Structure

Molecular Weight	: 117.15
Molecular Formula	: $C_5H_{11}NO_2$



Physical Description	: White crystals or crystalline powder
Assay	: 98.5 - 101.0 %
Identification	: IR
pH	: 5.5 - 7.0
Specific Optical Rotation	: +26.6 - +28.8 °
Residue on Ignition	: ≤ 0.1%
Loss on Drying	: ≤ 0.5%
Chloride (Cl)	: ≤ 500ppm
Iron (Fe)	: ≤ 30ppm
Sulphate (SO <sub>4</sub> )	: ≤ 300ppm
Ammonium	: ≤ 200ppm
Heavy Metals	: ≤ 15ppm
Lead (Pb)	: ≤ 3ppm
Arsenic (As)	: ≤ 1ppm
Cadmium (Cd)	: ≤ 1ppm
Mercury (Hg)	: ≤ 0.1ppm
Pharmacopoeia Specification(s)	: Conforms to USP
Version	: v1.0

#### About L-Valine

Valine is an essential, non-polar, branched-chain amino acid found in meat, dairy and soy products. It is involved in energy production and muscle metabolism in humans. L-Valine is the L-enantiomer of valine and is commonly used as a component in cell culture media.

#### Storage

Recommended storage temperature: +20°C.

#### Hazards and Transport

Not classified as hazardous under CLP.  
Not classified as dangerous for transport.

#### Glentham Product Specification

This document was generated electronically and is therefore valid without signature. © Glentham Life Sciences Ltd, 2025