

Product Datasheet

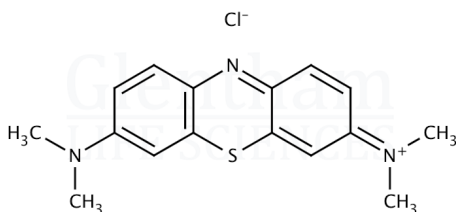
GT1060 - Methylene Blue, anhydrous (C.I. 52015)

Product Details

Product Name	Methylene Blue, anhydrous (C.I. 52015)
Glentham Code	GT1060
CAS Number	61-73-4
EINECS	200-515-2
Farbindex	52015
MDL-Nummer	MFCD00012111
PubChem SID	310276715
Zusätzliche CAS	7220-79-3 ($\cdot 3\text{H}_2\text{O}$)
Zusätzliche CAS	122965-43-9 ($\cdot x\text{H}_2\text{O}$)
Related Categories	Biochemicals, Dyes & Stains

Structure

Molecular Weight	: 319.85
Molecular Formula	: $\text{C}_{16}\text{H}_{18}\text{ClN}_3\text{S}$



Storage

Recommended storage temperature: +20°C.

Hazards and Transport

Not classified as dangerous for transport.

CLP Classification

Skin Irr. 2, Acute Tox. 4,
STOT SE 3, Eye Irr. 2A

Signal Word

Achtung

Hazard Codes

H315, H302, H335, H319

Precautionary Codes

P280, P302+P352,
P305+P351+P338, P261,
P301+P312

Pictograms



Glentham Product Specification

Physical Description	: Dark green crystalline powder
Solubility (0.1% in water)	: Clear, blue to dark blue solution
Loss on Drying	: $\leq 8.0\%$ (100°C, 1h)
Residue on Ignition	: $\leq 1.2\%$
Arsenic (As)	: $\leq 8\text{ppm}$
Copper (Cu) + Zinc (Zn)	: $\leq 0.02\%$
Assay	: 98.0 - 103.0 % (dried basis)
Identification (IR)	: To conform to standard
Version	: v1.1

About Methylene Blue, anhydrous (C.I. 52015)

Methylene blue is a synthetic dye first used in the textile industry. It is used as a biological stain, staining nucleic acids and other negatively charged cell components. Methylene blue has also been used in medicine as a treatment for methemoglobinemia and in aquaculture for treating fungal infections in fish.

This document was generated electronically and is therefore valid without signature. © Glentham Life Sciences Ltd, 2025