

## Product Datasheet

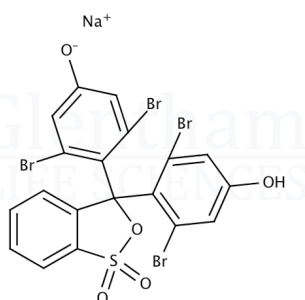
### GT3694 - Bromophenol Blue sodium salt

#### Product Details

Product Name	Bromophenol Blue sodium salt
Glenthams Code	GT3694
CAS Number	34725-61-6
EINECS	252-170-2
MDL-Nummer	MFCD00013793
Related Categories	Biochemicals, Dyes & Stains, Reagents for Gel Electrophoresis of DNA/RNA, Reagents for Gel Electrophoresis of Proteins

#### Structure

Molecular Weight	: 691.96
Molecular Formula	: $C_{19}H_9Br_4NaO_5S$



#### Glenthams Product Specification

Physical Description	: Dark blue-black, brown or grey powder
Dye Content	: $\geq 90\%$
Solubility (0.1% in water)	: Clear, dark red or blue solution
pH Transition Range	: 3.0 - 4.6 (green-yellow to blue-violet)
Wavelength of Maximum Absorption	: 434 - 439 nm (pH 3.0, $\lambda_1$ )
	: 590 - 594 nm (pH 4.6, $\lambda_2$ )
Absorptivity (E1%, 1cm cell)	: 320 - 370 (pH 3.0, at $\lambda_1$ )
	: 880 - 980 (pH 4.6, at $\lambda_2$ )
Loss on Drying	: $\leq 5.0\%$
Version	: v1.0

#### About Bromophenol Blue sodium salt

No further details on record.

#### Storage

Recommended storage temperature: +20°C.

#### Hazards and Transport

Not classified as hazardous under CLP.

Not classified as dangerous for transport.

This document was generated electronically and is therefore valid without signature. © Glenthams Life Sciences Ltd, 2025