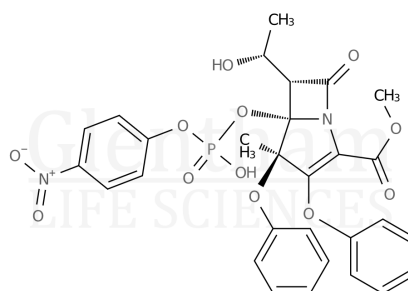


Certificate of Analysis

Product Name	Proteinase K
Glentham Code	GE0990
CAS Number	39450-01-6
EINECS	254-457-8
MDL-Nummer	MFCD00132129
Batch Number	946GSE

Molecular Weight	-
Molecular Formula	-
Storage Temp.	-20°C



Property	Specification	Batch 946GSE
Physical Description	White or almost white lyophilized powder	White lyophilized powder
Solubility	≥ 20mg/ml in water	≥ 20mg/ml
DNA	≤ 10 pg/mg enzyme	≤ 10 pg/mg
DNase	Not detected	Not detected
RNase	Not detected	Not detected
Protein Content	≥ 70% (based on absorbance at 280nm)	≥ 70%
Activity	≥ 30units/mg (pH 7.5, 37°C, dried basis)	≥ 30units/mg

Specification Version	v1.0
Manufacture Date	2023-05-15
Re-Test Date	2029-05-20

Glentham Life Sciences confirm that the above referenced product conformed to the information displayed in this document on the quality release date. Please check www.glentham.com or contact us using the details above for the current version of this document.

This document was generated electronically and is therefore valid without signature. © Glentham Life Sciences Ltd, 2025