

Product Datasheet

GC1712 - L-Rhamnose monohydrate

Product Details

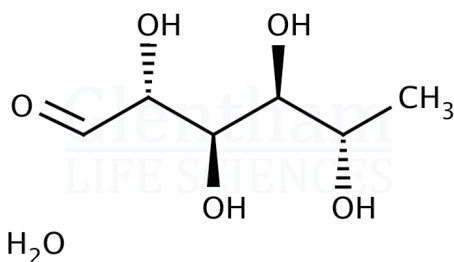
| | |
|--------------------|--|
| Product Name | L-Rhamnose monohydrate |
| Glentham Code | GC1712 |
| CAS Number | 10030-85-0 |
| EINECS | 222-793-4 |
| MDL Number | MFCD00071591 |
| Additional CAS | 3615-41-6 |
| Additional CAS | 6155-35-7 |
| PubChem SID | 310279683 |
| Related Categories | Carbohydrates, Core Carbohydrates, Biochemicals |

Glentham Product Specification

| | |
|---------------------------|---|
| Physical Description | : White to off-white crystalline powder |
| Specific Optical Rotation | : +7.5 - +9.5 ° |
| Melting Point | : 90 - 94 °C |
| Sulphated Ash | : ≤ 0.1% |
| Heavy Metals | : ≤ 10ppm |
| Loss on Drying | : ≤ 10.0% |
| Total Plate Count | : ≤ 1000CFU/g |
| Yeast & Mould | : ≤ 100CFU/g |
| Assay (HPLC) | : ≥ 98.0% |
| Version | : v1.1 |

Structure

| | |
|-------------------|-----------------------------|
| Molecular Weight | : 182.19 |
| Molecular Formula | : $C_6H_{12}O_5 \cdot H_2O$ |



About L-Rhamnose monohydrate

Naturally occurring as the L-isomer, L-Rhamnose is a deoxy sugar classed as a methyl-pentose or a 6-deoxy-hexose. Rhamnose can be isolated from plants. In nature it is often bound to other sugars, such as in the cell wall of plants and the outer membrane of cells of some bacteria in the Mycobacterium genus.

Storage

Recommended storage temperature: +20°C.

Hazards and Transport

Not classified as hazardous under CLP.
Not classified as dangerous for transport.

This document was generated electronically and is therefore valid without signature. © Glentham Life Sciences Ltd, 2025