

## Product Datasheet

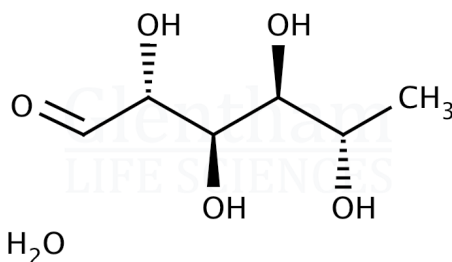
### GC1712 - L-Rhamnose monohydrate

#### Product Details

Product Name	L-Rhamnose monohydrate
Glentham Code	GC1712
CAS Number	10030-85-0
EINECS	222-793-4
MDL Number	MFCD00071591
Additional CAS	3615-41-6
Additional CAS	6155-35-7
PubChem SID	310279683
Related Categories	Carbohydrates, Core Carbohydrates, Biochemicals

#### Structure

Molecular Weight : 182.19  
Molecular Formula :  $C_6H_{12}O_5 \cdot H_2O$



#### Storage

Recommended storage temperature: +20°C.

#### Hazards and Transport

Not classified as hazardous under CLP.  
Not classified as dangerous for transport.

### Glentham Product Specification

Physical Description	: White to off-white crystalline powder
Specific Optical Rotation	: +7.5 - +9.5 °
Melting Point	: 90 - 94 °C
Sulphated Ash	: ≤ 0.1%
Heavy Metals	: ≤ 10ppm
Loss on Drying	: ≤ 10.0%
Total Plate Count	: ≤ 1000CFU/g
Yeast & Mould	: ≤ 100CFU/g
Assay (HPLC)	: ≥ 98.0%
Version	: v1.1

### About L-Rhamnose monohydrate

Naturally occurring as the L-isomer, L-Rhamnose is a deoxy sugar classed as a methyl-pentose or a 6-deoxy-hexose. Rhamnose can be isolated from plants. In nature it is often bound to other sugars, such as in the cell wall of plants and the outer membrane of cells of some bacteria in the Mycobacterium genus.