

Product Datasheet

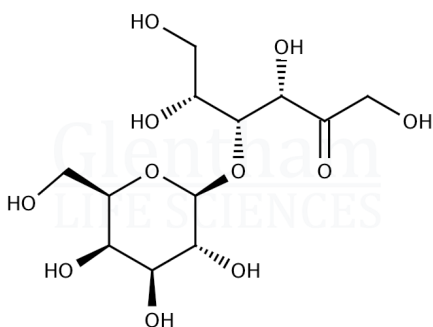
GC1952 - Lactulose, Ph. Eur. grade

Product Details

| | |
|--------------------|---|
| Product Name | Lactulose, Ph. Eur. grade |
| Glentham Code | GC1952 |
| CAS Number | 4618-18-2 |
| EINECS | 225-027-7 |
| MDL Number | MFCD00151469 |
| PubChem SID | 310275685 |
| Related Categories | Carbohydrates, Core Carbohydrates, Biochemicals, Oligosaccharides |

Structure

| | |
|-------------------|---|
| Molecular Weight | : 342.30 |
| Molecular Formula | : C ₁₂ H ₂₂ O ₁₁ |



| | |
|--------------------------------|--|
| Physical Description | : White to almost white crystalline powder |
| Identification | : According to Ph. Eur. |
| Solubility | : Freely soluble in water, sparingly soluble in methanol, practically insoluble in toluene |
| Solubility (6% in water) | : Clear, colourless solution |
| pH | : 3.0 - 7.0 None |
| Specific Optical Rotation | : -50.0 - -46.0 ° |
| Impurity C | : ≤ 2.0% (lactose) |
| Any Other Individual Impurity | : ≤ 0.5% |
| Total Impurities | : ≤ 3.0% |
| Methanol | : ≤ 50ppm |
| Boron (B) | : ≤ 9ppm |
| Water | : ≤ 2.5% |
| Sulphated Ash | : ≤ 0.1% |
| Total Aerobic Microbial Count | : ≤ 100CFU/g |
| E. Coli | : Absent |
| Assay (HPLC) | : 98.0 - 102.0 % (anhydrous basis) |
| Pharmacopoeia Specification(s) | : Ph. Eur. |
| Version | : v1.1 |

About Lactulose, Ph. Eur. grade

No further details on record.

Storage

Recommended storage temperature: +20°C.

Hazards and Transport

Not classified as hazardous under CLP.
Not classified as dangerous for transport.

Glentham Product Specification

This document was generated electronically and is therefore valid without signature. © Glentham Life Sciences Ltd, 2023