

## Product Datasheet

### GC2221 - Ethyl cellulose, 10 cP

Viscosity : 5 - 15 mPa.s (5% in Toluene and Ethanol (80:20))

Version : v1.0

#### Product Details

Product Name : Ethyl cellulose, 10 cP  
Glentham Code : GC2221  
CAS Number : 9004-57-3  
Related Categories : Carbohydrates,  
Polysaccharides

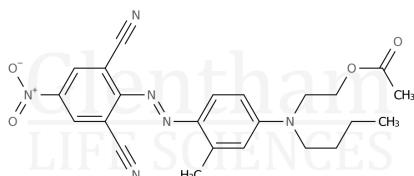
#### About Ethyl cellulose, 10 cP

No further details on record.

#### Structure

Molecular Weight : -

Molecular Formula : -



#### Storage

Recommended storage temperature: +20°C.

#### Hazards and Transport

Not classified as hazardous under CLP.

Not classified as dangerous for transport.

#### Glentham Product Specification

Physical Description : White to off-white powder  
Loss on Drying : ≤ 3.0%

This document was generated electronically and is therefore valid without signature. © Glentham Life Sciences Ltd, 2025