

## Product Datasheet

### GC2342 - Polyethylene glycol 6000

#### Product Details

Product Name	Polyethylene glycol 6000
Glenthams Code	GC2342
CAS Number	25322-68-3
EINECS	500-038-2

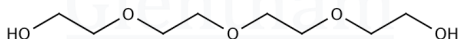
Melting Point	: $\geq 58^{\circ}\text{C}$
Average Molecular Weight	: 5000 - 7000 (calc. from hydroxyl number)
Version	: v1.0

#### About Polyethylene glycol 6000

No further details on record.

#### Structure

Molecular Weight	: ~6,000
Molecular Formula	: $(-\text{CH}_2\text{CH}_2\text{O}-)_n$



#### Storage

Recommended storage temperature:  $+20^{\circ}\text{C}$ .

#### Hazards and Transport

Not classified as hazardous under CLP.

Not classified as dangerous for transport.

#### Glenthams Product Specification

Physical Description	: White powder, crystals or flakes
Solubility (10% in water)	: Clear to faintly turbid, colourless solution
pH (10% in water)	: 4.5 - 8.0

This document was generated electronically and is therefore valid without signature. © Glenthams Life Sciences Ltd, 2025