

## Product Datasheet

### GC3201 - Sucrose, GlenBiol™, suitable for molecular biology

#### Product Details

Product Name	Sucrose, GlenBiol™, suitable for molecular biology
Glentham Code	GC3201
CAS Number	57-50-1
EINECS	200-334-9
MDL Number	MFCD00006626
Related Categories	Carbohydrates, Core Carbohydrates, Biochemicals, Oligosaccharides

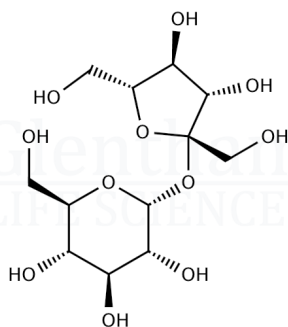
Physical Description	: White crystalline powder or colourless crystals
Solubility (50% in water)	: Clear, colourless solution
Heavy Metals	: ≤ 5ppm
RNase	: None detected
DNase	: None detected
Proteases	: None detected
Purity	: ≥ 99.5%
Version	: v1.0

#### About Sucrose, GlenBiol™, suitable for molecular biology

No further details on record.

#### Structure

Molecular Weight : 342.30  
Molecular Formula :  $C_{12}H_{22}O_{11}$



#### Storage

Recommended storage temperature: +20°C.

#### Hazards and Transport

Not classified as hazardous under CLP.  
Not classified as dangerous for transport.

#### Glentham Product Specification

This document was generated electronically and is therefore valid without signature. © Glentham Life Sciences Ltd, 2025