

Product Datasheet

GC3201 - Sucrose, GlenBiol™, suitable for molecular biology

Product Details

| | |
|--------------------|-------------------------------------------------------------------|
| Product Name | Sucrose, GlenBiol™, suitable for molecular biology |
| Glentham Code | GC3201 |
| CAS Number | 57-50-1 |
| EINECS | 200-334-9 |
| MDL Number | MFCD00006626 |
| Related Categories | Carbohydrates, Core Carbohydrates, Biochemicals, Oligosaccharides |

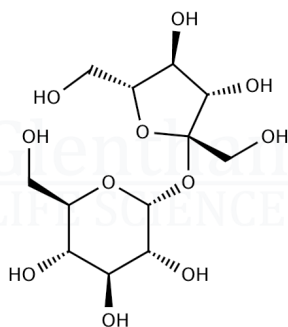
| | |
|---------------------------|---------------------------------------------------|
| Physical Description | : White crystalline powder or colourless crystals |
| Solubility (50% in water) | : Clear, colourless solution |
| Heavy Metals | : ≤ 5ppm |
| RNase | : None detected |
| DNase | : None detected |
| Proteases | : None detected |
| Purity | : ≥ 99.5% |
| Version | : v1.0 |

About Sucrose, GlenBiol™, suitable for molecular biology

No further details on record.

Structure

| | |
|-------------------|---------------------------------------------------|
| Molecular Weight | : 342.30 |
| Molecular Formula | : C ₁₂ H ₂₂ O ₁₁ |



Storage

Recommended storage temperature: +20°C.

Hazards and Transport

Not classified as hazardous under CLP.
Not classified as dangerous for transport.

Glentham Product Specification

This document was generated electronically and is therefore valid without signature. © Glentham Life Sciences Ltd, 2023