

## Product Datasheet

### GC3745 - 1,2:5,6-Di-O-isopropylidene- e-a-D-gulofuranose

#### Product Details

Product Name	1,2:5,6-Di-O-isopropylidene-a-D-gulofuranose
Glentham Code	GC3745
CAS Number	14686-89-6
MDL Number	MFC00069693
PubChem SID	310275481
Related Categories	Carbohydrates

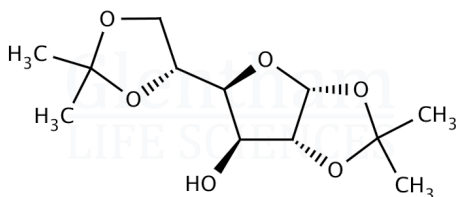
Physical Description	: White to off-white crystalline powder
Identification (NMR)	: To conform to standard
Solubility (5% in water)	: Clear, colourless solution
Assay	: ≥ 98.0%
Version	: v1.1

#### About 1,2:5,6-Di-O-isopropylidene-a-D-gulofuranose

No further details on record.

#### Structure

Molecular Weight	: 260.28
Molecular Formula	: C <sub>12</sub> H <sub>20</sub> O <sub>6</sub>



#### Storage

Recommended storage temperature: +20°C.

#### Hazards and Transport

Not classified as hazardous under CLP.  
Not classified as dangerous for transport.

#### Glentham Product Specification

This document was generated electronically and is therefore valid without signature. © Glentham Life Sciences Ltd, 2025