

## Product Datasheet

### GC4473 - Sucrose

#### Product Details

Product Name	Sucrose
Glentham Code	GC4473
CAS Number	57-50-1
EINECS	200-334-9
MDL Number	MFCD00006626
PubChem SID	310280339
Related Categories	Carbohydrates, Core Carbohydrates, Biochemicals, Raw Materials (IVD), Reagents for PCR, Reagents for Gel Electrophoresis of DNA/RNA, Oligosaccharides

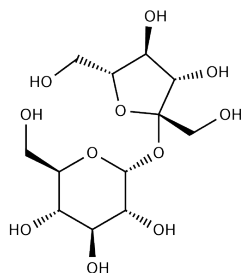
Physical Description	: Colourless to white crystalline powder
Identification	: IR
Heavy Metals	: ≤ 5ppm
Calcium (Ca)	: ≤ 0.05%
Residue on Ignition	: ≤ 0.1%
Reducing Sugars	: ≤ 0.1%
Specific Optical Rotation	: 66.3 - 67.0 °
Purity	: ≥ 99.5%
Version	: v1.0

#### About Sucrose

No further details on record.

#### Structure

Molecular Weight	: 342.30
Molecular Formula	: C <sub>12</sub> H <sub>22</sub> O <sub>11</sub>



#### Storage

Recommended storage temperature: +20°C.

#### Hazards and Transport

Not classified as hazardous under CLP.  
Not classified as dangerous for transport.

#### Glentham Product Specification

This document was generated electronically and is therefore valid without signature. © Glentham Life Sciences Ltd, 2021