

## Product Datasheet

### GC5831 - beta-Lactose

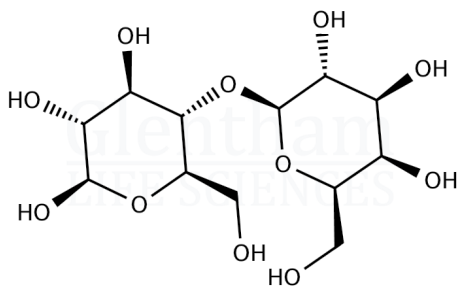
#### Product Details

|                    |                                    |
|--------------------|------------------------------------|
| Product Name       | beta-Lactose                       |
| Glentham Code      | GC5831                             |
| CAS Number         | 5965-66-2                          |
| EINECS             | 227-751-9                          |
| MDL Number         | MFCD00064521                       |
| PubChem SID        | 310275677                          |
| Related Categories | Carbohydrates,<br>Oligosaccharides |

|                          |                              |
|--------------------------|------------------------------|
| Physical Description     | : White to off-white powder  |
| Solubility (5% in water) | : Clear, colourless solution |
| Heavy Metals (as Pb)     | : ≤ 5ppm                     |
| Sulphated Ash            | : ≤ 0.1%                     |
| Loss on Drying           | : ≤ 1.0%                     |
| alpha-Lactose            | : ≤ 30%                      |
| beta-Lactose             | : ≥ 70%                      |
| Lactose                  | : ≥ 98%                      |
| Version                  | : v1.0                       |

#### Structure

Molecular Weight : 342.30  
Molecular Formula :  $C_{12}H_{22}O_{11}$



#### About beta-Lactose

No further details on record.

#### Storage

Recommended storage temperature: +20°C.

#### Hazards and Transport

Not classified as hazardous under CLP.  
Not classified as dangerous for transport.

#### Glentham Product Specification

This document was generated electronically and is therefore valid without signature. © Glentham Life Sciences Ltd, 2024