

Product Datasheet

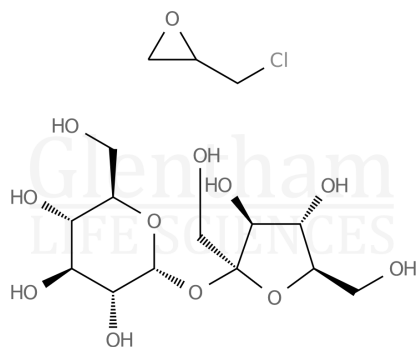
GC7257 - Polysucrose 400

Product Details

Product Name	Polysucrose 400
Glenthams Code	GC7257
CAS Number	26873-85-8
EINECS	200-334-9
MDL Number	MFCD00081599
Related Categories	Carbohydrates, Biochemicals, Reagents for Gel Electrophoresis of DNA/RNA

Structure

Molecular Weight	: 300,000 - 550,000
Molecular Formula	: -



Physical Description	: White to off-white powder
Solubility (10% in water)	: Clear, colourless solution
pH (10% in water)	: 7.0 - 9.0
Specific Optical Rotation ([α] _{20/D})	: +53 - +59 ° (c=1, water)
Loss on Drying	: ≤ 5.0% (105°C)
Chloride (Cl)	: ≤ 0.05%
Sulphated Ash	: ≤ 0.3%
Average Molecular Weight	: 350,000 - 550,000
Version	: v1.1

About Polysucrose 400

No further details on record.

Storage

Recommended storage temperature: +20°C.

Hazards and Transport

Not classified as hazardous under CLP.
Not classified as dangerous for transport.

Glenthams Product Specification

This document was generated electronically and is therefore valid without signature. © Glenthams Life Sciences Ltd, 2025