

Product Datasheet

GE2832 - 2,6-Dichloroindophenol

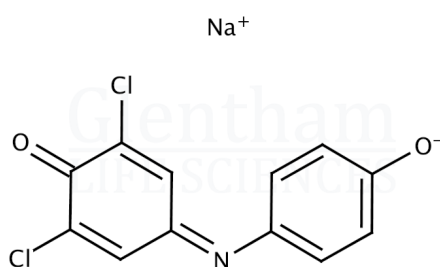
sodium salt, EP grade

Product Details

Product Name	2,6-Dichloroindophenol sodium salt, EP grade
Glenthams Code	GE2832
CAS Number	620-45-1
EINECS	210-640-4
MDL Number	MFCD00150014
Additional CAS	1266615-56-8 ($\cdot xH_2O$)
Related Categories	Biochemicals, Dyes & Stains, Organics, Phenols

Structure

Molecular Weight	: 290.08 (anhydrous)
Molecular Formula	: $C_{12}H_6Cl_2NNaO_2 \cdot xH_2O$



Storage

Recommended storage temperature: +20°C.

Hazards and Transport

Not classified as hazardous under CLP.
Not classified as dangerous for transport.

Glenthams Product Specification

Physical Description	: Green to dark blue powder
Solubility	: According to EP
Wavelength of Maximum Absorption (λ_{max})	: 640 - 645 nm
Absorptivity (1%/1cm)	: According to EP
Loss on Drying	: $\leq 14.0\%$
Assay (Titration)	: $\geq 98.0\%$
Pharmacopoeia Specification(s)	: EP
Version	: v1.0

About 2,6-Dichloroindophenol sodium salt, EP grade

2,6-Dichloroindophenol sodium salt is an organic redox dye. It is blue when oxidised and colourless when reduced. It is commonly used for vitamin C determination.