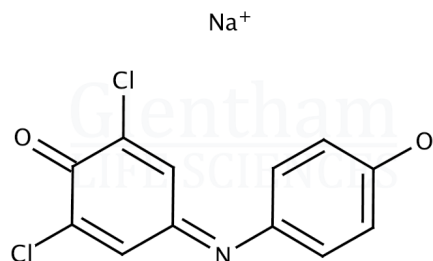


Product Specification

Product Name	2,6-Dichloroindophenol sodium salt, EP grade
Glentham Code	GE2832
CAS Number	620-45-1
EINECS	210-640-4
MDL Number	MFCD00150014
Additional CAS	1266615-56-8 (\cdot xH ₂ O)

Molecular Weight	290.08 (anhydrous)
Molecular Formula	$C_{12}H_6Cl_2NNaO_2 \cdot xH_2O$
Storage Temp.	+20°C



Property	Specification
Physical Description	Green to dark blue powder
Solubility	According to EP
Wavelength of Maximum Absorption (λ_{max})	640 - 645 nm
Absorptivity (1%/1cm)	According to EP
Loss on Drying	$\leq 14.0\%$
Assay (Titration)	$\geq 98.0\%$
Pharmacopoeia Specification(s)	EP

Specification Version	- v1.0
Date Created	- 2020-12-11

Glentham Life Sciences confirm that the above referenced product conformed to the information displayed in this document on the quality release date. Please check www.glentham.com or contact us using the details above for the current version of this document.

This document was generated electronically and is therefore valid without signature. © Glentham Life Sciences Ltd, 2025