

## Product Datasheet

### GE4135 - TATU

Pictograms



#### Product Details

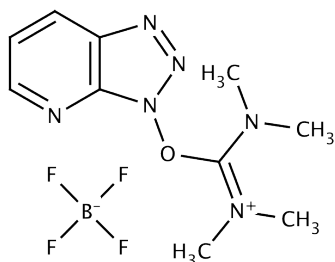
Product Name	TATU
Glentham Code	GE4135
CAS Number	873798-09-5
PubChem SID	310267139
MDL Number	MFCD08064301
Additional CAS	873678-56-9
Related Categories	Biochemicals, Peptide Reagents

#### Glentham Product Specification

Physical Description	: White to off-white crystalline powder
Assay	: $\geq 99.0\%$
Loss on Drying	: $\leq 0.5\%$
Version	: v1.0

#### Structure

Molecular Weight	: 322.07
Molecular Formula	: C <sub>10</sub> H <sub>15</sub> N <sub>6</sub> OBF <sub>4</sub>



#### About TATU

No further details on record.

#### Storage

Recommended storage temperature: +4°C.

#### Hazards and Transport

Not classified as dangerous for transport.

CLP Classification	Acute Oral Tox. 4, Skin Corr. 1C, Eye Dam. 1
Signal Word	Danger
Hazard Codes	H302, H314, H318
Precautionary Codes	P261, P280, P301+P312, P305+P351+P338, P310

This document was generated electronically and is therefore valid without signature. © Glentham Life Sciences Ltd, 2022