

## Product Datasheet

### GE4923 - Leu-Leu methyl ester hydrobromide

Physical Description : White powder  
Assay (TLC) :  $\geq 99.0\%$   
Version : v1.0

#### Product Details

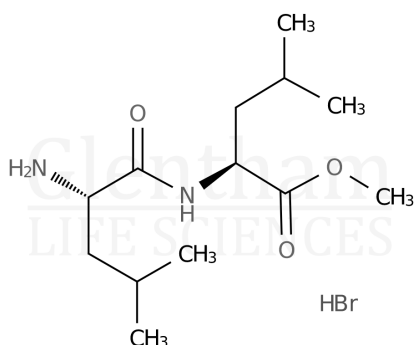
Product Name : Leu-Leu methyl ester hydrobromide  
Glentham Code : GE4923  
CAS Number : 16689-14-8  
Related Categories : Peptide Reagents

#### About Leu-Leu methyl ester hydrobromide

No further details on record.

#### Structure

Molecular Weight : 339.27  
Molecular Formula :  $C_{13}H_{26}N_2O_3 \cdot HBr$



#### Storage

Recommended storage temperature:  $-20^{\circ}\text{C}$ .

#### Hazards and Transport

Not classified as hazardous under CLP.  
Not classified as dangerous for transport.

#### Glentham Product Specification

This document was generated electronically and is therefore valid without signature. © Glentham Life Sciences Ltd, 2024