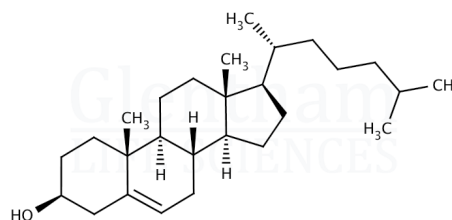


Product Specification

Product Name	Cholesterol, non-animal origin
Glentham Code	GE7110
CAS Number	57-88-5
EINECS	200-353-2
MDL Number	MFCD00003646
Molecular Weight	386.66
Molecular Formula	C ₂₇ H ₄₆ O
Storage Temp.	+4°C



Property	Specification
Physical Description	White to almost white crystalline powder
Pharmacopoeia Specification(s)	EP
Assay	≥ 99.0% (cholesterol, dried basis)
Endotoxins	≤ 1.0EU/mg
Mould and Yeast	≤ 100CFU/g
Total Aerobic Microbial Count	≤ 100CFU/g
Loss on Drying	≤ 0.3% (4h, 60°C)
Heavy Metals	≤ 10ppm
Sulphated Ash	≤ 0.1%
Acidity	≤ 0.3ml
Solubility (1% in ethanol)	Clear solution (2h, 50°C)
Specific Optical Rotation	-43.0 - -39.0 ° (c=2, CHCl ₃)
	Test C according to EP
Identification	TLC
Melting Point	147 - 150 °C
Source	Vegetal

Specification Version	-	v1.0
Date Created	-	2016-07-06

Glentham Life Sciences confirm that the above referenced product conformed to the information displayed in this document on the quality release date. Please check www.glentham.com or contact us using the details above for the current version of this document.

This document was generated electronically and is therefore valid without signature. © Glentham Life Sciences Ltd, 2023