

Product Datasheet

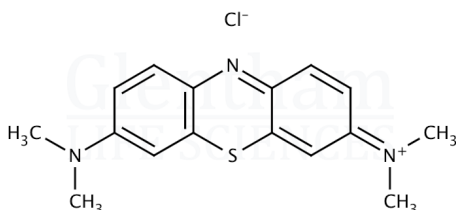
GE9796 - Methylene Blue hydrate (C.I. 52015)

Product Details

Product Name	Methylene Blue hydrate (C.I. 52015)
Glenthams Code	GE9796
CAS Number	122965-43-9
EINECS	200-515-2
Colour Index	52015
MDL Number	MFCD00012111
Additional CAS	7220-79-3 ($\cdot 3\text{H}_2\text{O}$)
Additional CAS	61-73-4 (anhy.)
Related Categories	Biochemicals, Dyes & Stains

Structure

Molecular Weight	: 319.85 (anhy.)
Molecular Formula	: $\text{C}_{16}\text{H}_{18}\text{ClN}_3\text{S} \cdot x\text{H}_2\text{O}$



Signal Word

Hazard Codes

Precautionary Codes

Warning

H315, H302, H335, H319

P280, P302+P352,
P305+P351+P338, P261,
P301+P312

Pictograms



Glenthams Product Specification

Physical Description	: Dark green crystalline powder
Identification (IR)	: To conform to standard
Solubility (0.1% in water)	: Clear, blue to dark blue solution
Wavelength of Maximum Absorption (λ_{max})	: 660 - 665 nm (2mg/L in 50% ethanol)
Zinc (Zn)	: $\leq 0.02\%$
Loss on Drying	: $\leq 14.5\%$ (105°C, 1h)
Assay	: $\geq 98.0\%$ (dried basis)
Version	: v1.0

About Methylene Blue hydrate (C.I. 52015)

Methylene blue is a synthetic dye first used in the textile industry. It is used as a biological stain, staining nucleic acids and other negatively charged cell components. Methylene blue has also been used in medicine as a treatment for methemoglobinemia and in aquaculture for treating fungal infections in fish.

Storage

Recommended storage temperature: +20°C.

Hazards and Transport

Not classified as dangerous for transport.

CLP Classification Skin Irr. 2, Acute Tox. 4,
STOT SE 3, Eye Irr. 2A

This document was generated electronically and is therefore valid without signature. © Glenthams Life Sciences Ltd, 2025