

## Product Datasheet

### GK1126 - [Ala1,3,11,15]-Endothelin 1

#### Product Details

Product Name [Ala1,3,11,15]-Endothelin 1  
Glentham Code GK1126  
CAS Number 121204-87-3  
MDL Number MFCD00143562  
PubChem SID 310265928

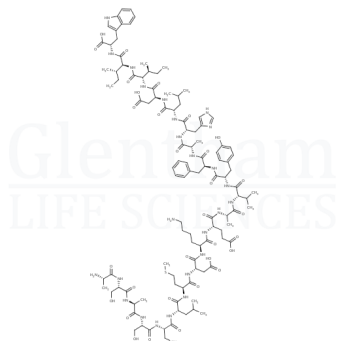
Solubility : Soluble in DMF  
Purity (HPLC) :  $\geq 95.0\%$   
Version : v1.0

#### About [Ala1,3,11,15]-Endothelin 1

No further details on record.

#### Structure

Molecular Weight : 2367.67  
Molecular Formula :  $C_{109}H_{163}N_{25}O_{32}S$



#### Storage

Recommended storage temperature:  $-20^{\circ}\text{C}$ .

#### Hazards and Transport

Not classified as hazardous under CLP.  
Not classified as dangerous for transport.

#### Glentham Product Specification

Physical Description : White solid  
Identification (MS) : To conform to standard

This document was generated electronically and is therefore valid without signature. © Glentham Life Sciences Ltd, 2024