

Product Datasheet

GK2113 - Chlorophyllin sodium copper salt

Product Details

| | |
|----------------|----------------------------------|
| Product Name | Chlorophyllin sodium copper salt |
| Glenthams Code | GK2113 |
| CAS Number | 11006-34-1 |
| EINECS | 234-242-5 |
| MDL Number | MFCD00012149 |
| PubChem SID | 310270065 |

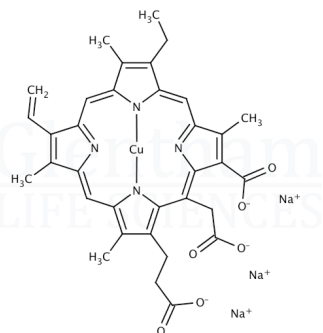
| | |
|----------------------|------------------------------|
| Physical Description | : Dark green to black powder |
| pH | : 9.0 - 11.0 |
| Loss on Drying | : ≤ 5.0% |
| Residue on Ignition | : ≤ 30.0% |
| Copper (Cu) | : ≥ 4.0% |
| Version | : v1.0 |

About Chlorophyllin sodium copper salt

No further details on record.

Structure

| | |
|-------------------|------------------------------|
| Molecular Weight | : 724.15 |
| Molecular Formula | : $C_{34}H_{31}CuN_4Na_3O_6$ |



Storage

Recommended storage temperature: +4°C.

Hazards and Transport

Not classified as hazardous under CLP.
Not classified as dangerous for transport.

Glenthams Product Specification

This document was generated electronically and is therefore valid without signature. © Glenthams Life Sciences Ltd, 2025