

## Product Datasheet

### GK3855 - Sodium 2-ethylhexyl sulfate solution, 40% in water

Pictograms



#### Product Details

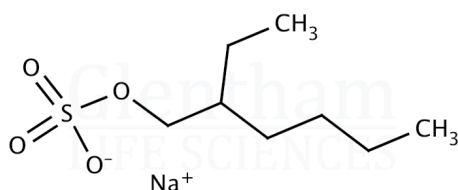
|                    |  |
|--------------------|--|
| Product Name       | Sodium 2-ethylhexyl sulfate solution, 40% in water |
| Glenthams Code     | GK3855   |
| CAS Number         | 126-92-1   |
| MDL Number         | MFCD00042047                                       |
| PubChem SID        | 310280096  |
| Related Categories | Detergents   |

#### Glenthams Product Specification

|                      |   |
|----------------------|---|
| Physical Description | : Clear, pale yellow to yellow-green solution |
| pH (1% in water)     | : 6.0 - 7.0                                   |
| Active Content       | : ≥ 40%                                       |
| Version              | : v1.0  |

#### Structure

|                   |   |
|-------------------|---|
| Molecular Weight  | : 232.27  |
| Molecular Formula | : C <sub>8</sub> H <sub>17</sub> NaO <sub>4</sub> S |



#### About Sodium 2-ethylhexyl sulfate solution, 40% in water

No further details on record.

#### Storage

Recommended storage temperature: +20°C.

#### Hazards and Transport

|  |                          |
|--|--------------------------|
| Not classified as dangerous for transport. |                          |
| CLP Classification                         | Skin Irr. 2, Eye Irr. 2A |
| Signal Word                                | Warning                  |
| Hazard Codes                               | H315, H319               |
| Precautionary Codes                        | P305+P351+P338           |

This document was generated electronically and is therefore valid without signature. © Glenthams Life Sciences Ltd, 2025