

Product Datasheet

GK9342 - N-(1-Naphthyl)ethylenediamine dihydrochloride

Hazard Codes H315, H335, H319
Precautionary Codes P264, P280, P302+P352,
P261, P304+P340,
P403+P233,
P305+P351+P338

Pictograms



Product Details

Product Name N-(1-Naphthyl)ethylenediamine dihydrochloride
Glentham Code GK9342
CAS Number 1465-25-4
EINECS 215-981-2
MDL Number MFCD00012556
PubChem SID 310277526
Related Categories Analytical Reagents

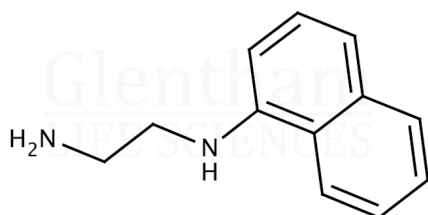
Glentham Product Specification

Physical Description : White, off-white to tan, grey or brown crystalline powder
Assay (Titration) : $\geq 98.0\%$ (anhydrous basis)
Suitability for detection of sulfonamide : To pass test
Identification (IR) : To conform to standard
Water (KF) : $\leq 5.0\%$
Version : v1.2

Structure

Molecular Weight : 259.18
Molecular Formula : $C_{12}H_{14}N_2 \cdot 2HCl$

HCl HCl



About N-(1-Naphthyl)ethylenediamine dihydrochloride

No further details on record.

Storage

Recommended storage temperature: +20°C.

Hazards and Transport

Not classified as dangerous for transport.
CLP Classification Skin Irr. 2, STOT SE 3,
Eye Irr. 2A
Signal Word Warning

This document was generated electronically and is therefore valid without signature. © Glentham Life Sciences Ltd, 2025