

Product Datasheet

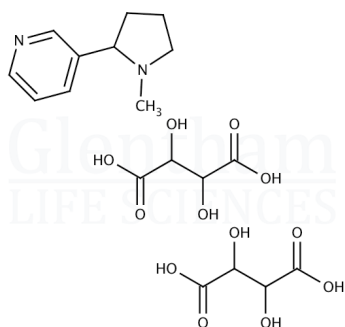
GL9693 - (-)-Nicotine hydrogen tartrate salt

Product Details

| | |
|--------------------|---|
| Product Name | (-)-Nicotine hydrogen tartrate salt |
| Glentham Code | GL9693 |
| CAS Number | 65-31-6 |
| EINECS | 200-607-2 |
| MDL Number | MFCDD00069368 |
| Additional CAS | 6019-06-3 ($\cdot 2\text{H}_2\text{O}$) |
| Additional CAS | 2624-48-8 |
| Additional CAS | 54-11-5 (base) |
| PubChem SID | 295369473 |
| Related Categories | APIs, Biochemicals, Phytochemicals, Alkaloids |

Structure

| | |
|-------------------|---|
| Molecular Weight | : 462.41 (anhydrous) |
| Molecular Formula | : $\text{C}_{10}\text{H}_{14}\text{N}_2 \cdot 2\text{C}_4\text{H}_6\text{O}_6$ (anhydrous) |



Storage

Recommended storage temperature: +4°C.

Hazards and Transport

| | |
|----------------------------|---|
| CLP Classification | Acute Tox. 2, Acute Tox. 2, Aquatic Chronic 2, Acute Tox. 1 |
| Signal Word | Danger |
| Hazard Codes | H330, H300, H411, H310 |
| Precautionary Codes | P273, P280, P302+P352, P304+P340, P305+P351+P338, P260, P301+P310 |
| Pictograms | |
| UN Number, Class, PG (RID) | UN1659 - 6.1 - PG II |

Glentham Product Specification

| | |
|--------------------------------|--|
| Physical Description | : White to almost white powder |
| Solubility | : 10% in water: Soluble : 1% in 96% ethanol: Slightly soluble |
| Identification | : IR |
| pH (10% in water) | : 3.0 - 3.4 |
| Specific Optical Rotation | : +21.0 - +23.0 ° (1% in water) |
| Related Substances (HPLC) | : Any Specified Impurity: $\leq 0.3\%$: (Continine, Myosmine, Nicotine-N-oxide, beta-Nicotryne, Anatabine, Anabasine, Normicotine) : Unspecified Impurity: $\leq 0.1\%$: Total Impurities: $\leq 0.8\%$ |
| Water | : 6.9 - 8.0 % |
| Sulphated Ash | : $\leq 0.1\%$ |
| Assay (HPLC) | : 98.5 - 101.5 % (anhydrous basis) |
| Residual Solvents | : Ethanol: $\leq 5000\text{ppm}$, Methanol: $\leq 3000\text{ppm}$ |
| Pharmacopoeia Specification(s) | : EP |
| Version | : v1.1 |

About (-)-Nicotine hydrogen tartrate salt

Product Datasheet

Nicotine is a naturally derived alkaloid found in the nightshade family of plants. It is a toxic, highly addictive central nervous system stimulant. Nicotine hydrogen tartrate salt is more stable during storage than the base form.