

Product Datasheet

GM3732 - L-Cysteine ethyl ester hydrochloride

Product Details

Product Name	L-Cysteine ethyl ester hydrochloride
Glenthams Code	GM3732
CAS Number	868-59-7
EINECS	212-779-6
MDL Number	MFCD00012631
PubChem SID	310270754
Related Categories	Amino Acids, Biochemicals

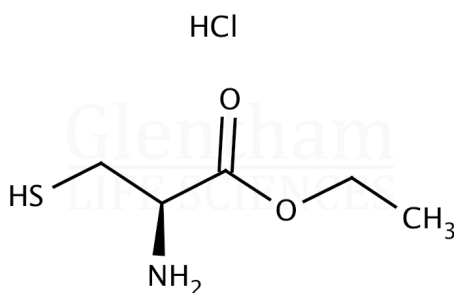
Physical Description	: White powder
Solubility (5% in water)	: Clear to very faintly turbid, colourless solution
Specific Optical Rotation ([α] _{20/D})	: -11.0 - -13.0 ° (c=2, 1M HCl)
Assay (Titration)	: 98.0 - 102.0 %
Version	: v1.0

About L-Cysteine ethyl ester hydrochloride

No further details on record.

Structure

Molecular Weight : 185.67
Molecular Formula : $C_5H_{11}NO_2S \cdot HCl$



Storage

Recommended storage temperature: +20°C.

Hazards and Transport

Not classified as hazardous under CLP.
Not classified as dangerous for transport.

Glenthams Product Specification

This document was generated electronically and is therefore valid without signature. © Glenthams Life Sciences Ltd, 2025