

Product Datasheet

GM4222 - L-Cysteine hydrochloride monohydrate

Hazard Codes H315, H336, H335, H319
Precautionary Codes P280, P261, P302+P352, P305+P351+P338

Pictograms

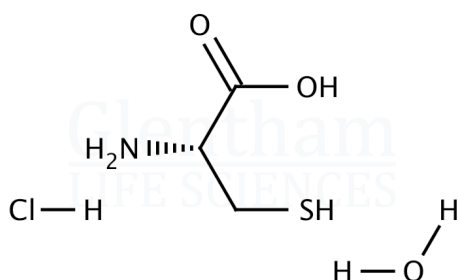


Product Details

Product Name L-Cysteine hydrochloride monohydrate
Glentham Code GM4222
CAS Number 7048-04-6
EINECS 200-157-7
MDL Number MFCD00065606
Additional CAS 345909-32-2 (-xH2O)
PubChem SID 310270758
Related Categories Amino Acids, Biochemicals, Raw Materials (IVD)

Structure

Molecular Weight : 175.64
Molecular Formula : $C_3H_7NO_2S \cdot HCl \cdot H_2O$



Glentham Product Specification

Physical Description : White powder or colourless crystals
Identification (IR) : To conform to standard
Specific Optical Rotation ($[\alpha]_{20/D}$) : +5.5 - +7.0 ° (c=8, 1M HCl)
pH (5% in water) : 1.5 - 2.0
Chloride (Cl) : 19.89 - 20.29 %
Ammonium (NH₄) : ≤ 0.02%
Sulphate (SO₄) : ≤ 0.02%
Iron (Fe) : ≤ 10ppm
Other Amino Acids : Not detectable
Loss on Drying : 8.5 - 12.0 %
Residue on Ignition : ≤ 0.1%
Lead (Pb) : ≤ 3ppm
Arsenic (As) : ≤ 1ppm
Mercury (Hg) : ≤ 0.1ppm
Cadmium (Cd) : ≤ 1ppm
Assay : 99.0 - 100.5 %
Version : v1.1

Storage

Recommended storage temperature: +20°C.

Hazards and Transport

Not classified as dangerous for transport.
CLP Classification Skin Irr. 2, STOT SE 3, STOT SE 3, Eye Irr. 2A
Signal Word Warning

About L-Cysteine hydrochloride monohydrate

No further details on record.

This document was generated electronically and is therefore valid without signature. © Glentham Life Sciences Ltd, 2024