

## Product Datasheet

### GM4839 - L-Lysine methyl ester dihydrochloride

#### Product Details

Product Name	L-Lysine methyl ester dihydrochloride
Glenthams Code	GM4839
CAS Number	26348-70-9
EINECS	247-625-7
MDL Number	MFCD00039067
PubChem SID	310275927
Related Categories	Amino Acid Derivatives

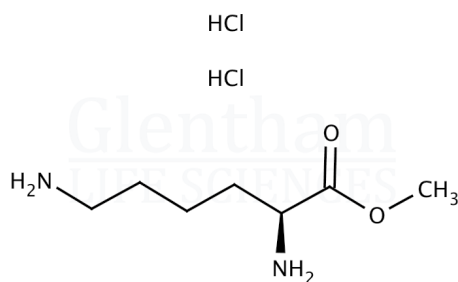
Physical Description	: White to almost white powder or crystals
Solubility (5% in water)	: Clear, colourless solution
Specific Optical Rotation ([α] <sub>20/D</sub> )	: +13.0 - +19.0 ° (c=5, water)
Assay	: ≥ 98.0%
Version	: v1.0

#### About L-Lysine methyl ester dihydrochloride

No further details on record.

#### Structure

Molecular Weight	: 233.14
Molecular Formula	: C <sub>7</sub> H <sub>16</sub> N <sub>2</sub> O <sub>2</sub> · 2HCl



#### Storage

Recommended storage temperature: +20°C.

#### Hazards and Transport

Not classified as hazardous under CLP.  
Not classified as dangerous for transport.

#### Glenthams Product Specification

This document was generated electronically and is therefore valid without signature. © Glenthams Life Sciences Ltd, 2024