

## Product Datasheet

### GP2300 - Parthenolide

#### Product Details

Product Name	Parthenolide
Glentham Code	GP2300
CAS Number	20554-84-1
MDL Number	MFCD00134592
PubChem SID	310278520
Related Categories	APIs, Biochemicals, Phytochemicals

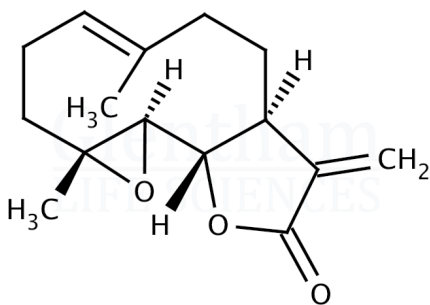
Solubility (5% in chloroform)	: Clear, colourless to faint yellow solution
Assay	: $\geq 98.0\%$
Version	: v1.0

#### About Parthenolide

No further details on record.

#### Structure

Molecular Weight	: 248.32
Molecular Formula	: $C_{15}H_{20}O_3$



#### Storage

Recommended storage temperature: +4°C.

#### Hazards and Transport

Not classified as hazardous under CLP.  
Not classified as dangerous for transport.

#### Glentham Product Specification

Physical Description	: White, off-white or pale yellow-brown powder
----------------------	--

This document was generated electronically and is therefore valid without signature. © Glentham Life Sciences Ltd, 2025