

Product Datasheet

GP8041 - Enoxolone

Pictograms

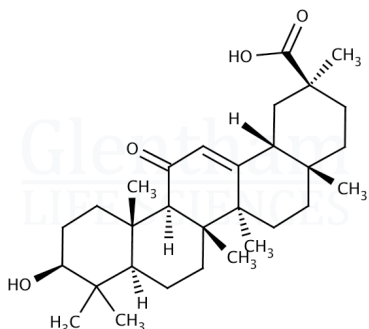


Product Details

Product Name	Enoxolone
Glentham Code	GP8041
CAS Number	471-53-4
EINECS	207-444-6
MDL Number	MFCD00003706
PubChem SID	310272560
Related Categories	APIs, Phytochemicals

Structure

Molecular Weight : 470.68
Molecular Formula : C₃₀H₄₆O₄



Glentham Product Specification

Physical Description	: White or almost white crystalline powder
Identification	: A, B, C according to EP
Solubility (1% in ethanol)	: Clear, colourless solution
Specific Optical Rotation	: +145 - +154 °
Any Individual Impurity	: ≤ 0.7%
Total Impurities	: ≤ 2.0%
Heavy Metals	: ≤ 20ppm
Sulphated Ash	: ≤ 0.2%
Loss on Drying	: ≤ 0.5%
Assay	: 98.0 - 101.0 % (dried basis)
Pharmacopoeia Specification(s)	: EP
Version	: v1.0

About Enoxolone

No further details on record.

Storage

Recommended storage temperature: +20°C.

Hazards and Transport

Not classified as dangerous for transport.

CLP Classification	Acute Oral Tox. 4, Eye Irrit. 2
Signal Word	Warning
Hazard Codes	H302, H319
Precautionary Codes	P261, P280, P301+P312, P305+P351+P338

This document was generated electronically and is therefore valid without signature. © Glentham Life Sciences Ltd, 2023