

Product Datasheet

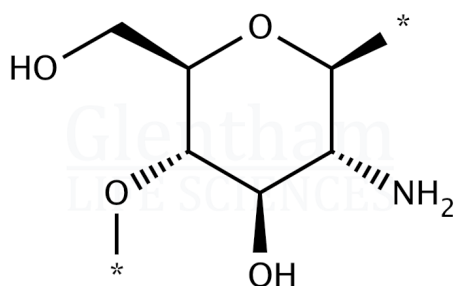
GP8956 - Chitosan (300 - 1000 cps); medium molecular weight

Product Details

Product Name	Chitosan (300 - 1000 cps); medium molecular weight
Glenthams Code	GP8956
CAS Number	9012-76-4
EINECS	618-480-0
MDL Number	MFCD00161512
Related Categories	APIs, Carbohydrates, Biochemicals, Natural Products, Polysaccharides, Oligosaccharides, Chitin & Chitosan, Cosmetic Raw Materials

Structure

Molecular Weight : 1,250,000 (avg.)
Molecular Formula : $[C_6H_{11}NO_4]_n$



Storage

Recommended storage temperature: +20°C.

Hazards and Transport

Not classified as hazardous under CLP.

Not classified as dangerous for transport.

Glenthams Product Specification

Physical Description	: White to light-tan powder
Degree of Deacetylation	: $\geq 90.0\%$
Ash	: $\leq 1.0\%$
Viscosity	: 300 - 1000 cps
Water	: $\leq 8.0\%$
Solubility (in acetic acid)	: $\geq 99\%$
pH	: 6.0 - 8.0 (1%, 20°C)
Arsenic (As)	: $\leq 1\text{mg/kg}$
Lead (Pb)	: $\leq 0.5\text{mg/kg}$
Mercury (Hg)	: $\leq 0.1\text{mg/kg}$
Particle Size	: ≤ 100 mesh
Microbiological Counts	: E. coli: ≤ 3 MPN/g
	: Salmonella spp.: Absent
	: Yeast and Moulds: ≤ 100 CFU/g
	: Total Plate Count: ≤ 1000 CFU/g
Version	: v1.1

About Chitosan (300 - 1000 cps); medium molecular weight

Chitosan is a polysaccharide comprised of linked D-glucosamine and N-acetyl-D-glucosamine units. It is produced by the deacetylation of chitin, a naturally occurring polysaccharide. Chitosan is commercially used in agriculture as a biopesticide but has potential applications in the biomedical field due to its antibacterial properties. This product is derived from shrimp shell.

This document was generated electronically and is therefore valid without signature. © Glenthams Life Sciences Ltd, 2025