

Product Datasheet

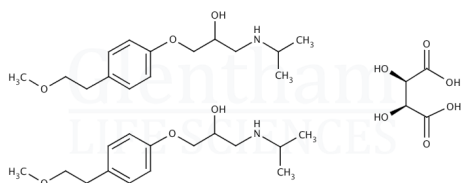
GP9016 - Metoprolol tartrate, EP grade

Product Details

Product Name	Metoprolol tartrate, EP grade
Glentham Code	GP9016
CAS Number	56392-17-7
EINECS	260-148-9
MDL Number	MFCD00056257
Additional CAS	51384-51-1
Related Categories	APIs

Structure

Molecular Weight	: 684.82
Molecular Formula	: $(C_{15}H_{25}NO_3)_2 \cdot C_4H_6O_6$



Physical Description	: White or almost white crystalline powder, or colourless crystals
Identification (IR)	: To conform to standard
Specific Optical Rotation	: +7.0 - +10.0 ° (c=2, water)
Solubility (2% in water)	: Clear solution, colour: ≤ B8
pH (2% in water)	: 6.0 - 7.0
Impurities M, N, O (TLC)	: To pass EP tests (a) ≤ 0.5%, (b) ≤ 0.2%
Impurities A, B, C, D, E, F, G, H, J (HPLC)	: ≤ 0.30% (each)
Any Individual Impurity (HPLC)	: ≤ 0.10%
Total Impurities (HPLC)	: ≤ 0.50%
Sulphated Ash	: ≤ 0.1%
Loss on Drying	: ≤ 0.5%
Assay	: 99.0 - 100.5 % (dried substance)
Pharmacopoeia Specification(s)	: EP
Version	: v1.0

About Metoprolol tartrate, EP grade

No further details on record.

Storage

Recommended storage temperature: +20°C.

Hazards and Transport

Not classified as hazardous under CLP.
Not classified as dangerous for transport.

Glentham Product Specification

This document was generated electronically and is therefore valid without signature. © Glentham Life Sciences Ltd, 2024