

Product Datasheet

GP9536 - Amlodipine

Pictograms



Product Details

| | |
|--------------------|--------------------|
| Product Name | Amlodipine |
| Glentham Code | GP9536 |
| CAS Number | 88150-42-9 |
| EINECS | 425-820-1 |
| MDL Number | MFCD00864687 |
| PubChem SID | 310266768 |
| Related Categories | APIs, Biochemicals |

Glentham Product Specification

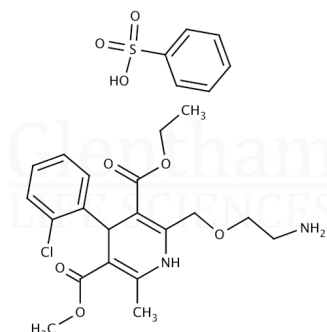
| | |
|----------------------------|---|
| Physical Description | : White to off-white powder |
| Solubility (2% in acetone) | : Clear, colourless to very faint yellow solution |
| Melting Point | : 134.0 - 142.0 °C |
| Assay | : ≥ 98.0% |
| Version | : v1.0 |

Structure

| | |
|-------------------|---|
| Molecular Weight | : 408.88 |
| Molecular Formula | : C ₂₀ H ₂₅ ClN ₂ O ₅ |

About Amlodipine

No further details on record.



Storage

Recommended storage temperature: -20°C.

Hazards and Transport

Not classified as dangerous for transport.

| | |
|---------------------|---|
| CLP Classification | Acute Oral Tox. 4, Skin Irrit. 2, Eye Irrit. 2, STOT SE 3 |
| Signal Word | Warning |
| Hazard Codes | H302, H315, H319, H335 |
| Precautionary Codes | P261, P280, P301+P312, P305+P351+P338 |

This document was generated electronically and is therefore valid without signature. © Glentham Life Sciences Ltd, 2023