

Product Datasheet

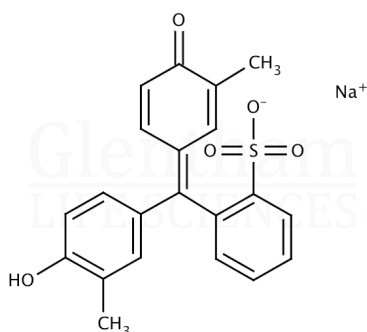
GT1602 - Cresol Red sodium salt

Product Details

Product Name	Cresol Red sodium salt
Glenthams Code	GT1602
CAS Number	62625-29-0
EINECS	263-654-8
MDL Number	MFCD00001618
PubChem SID	310270538
Related Categories	Biochemicals, Dyes & Stains

Structure

Molecular Weight	: 404.42
Molecular Formula	: C ₂₁ H ₁₇ NaO ₅ S



Solubility (1% in water)	: Clear, yellow solution
pH Transition Range	: 6.8 - 8.8 (yellow to purple)
Wavelength of Maximum Absorption (λ _{max1})	: 431.0 - 438.0 nm
Wavelength of Maximum Absorption (λ _{max2})	: 569.0 - 576.0 nm
Absorptivity (1%/1cm)	: 400 - 550 (λ _{max1} , pH 6.8)
Absorptivity (1%/1cm)	: 900 - 1100 (λ _{max2} , pH 8.8)
Loss on Drying	: ≤ 10.0% (110°C)
Dye Content (Spectrophotometry)	: ≥ 85.0%
Version	: v1.0

About Cresol Red sodium salt

No further details on record.

Storage

Recommended storage temperature: +20°C.

Hazards and Transport

Not classified as hazardous under CLP.
Not classified as dangerous for transport.

Glenthams Product Specification

Physical Description : Red to orange or brown powder

This document was generated electronically and is therefore valid without signature. © Glenthams Life Sciences Ltd, 2025