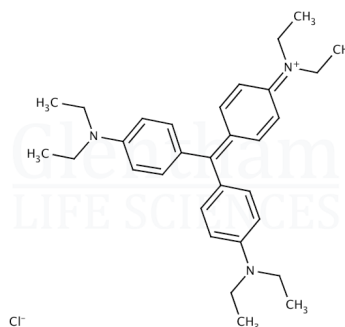


Product Specification

| | |
|-------------------|---------------------------|
| Product Name | Ethyl Violet (C.I. 42600) |
| Glentham Code | GT2065 |
| CAS Number | 2390-59-2 |
| EINECS | 219-231-5 |
| Colour Index | 42600 |
| MDL Number | MFCD00011765 |
| PubChem SID | 310272962 |
| Molecular Weight | 492.15 |
| Molecular Formula | $C_{31}H_{42}ClN_3$ |
| Storage Temp. | +20°C |



| Property | Specification |
|--|--|
| Physical Description | Dark brown to olive green crystalline powder |
| Solubility (0.1% in water) | Clear, purple to dark purple solution |
| Methanol Insoluble Matter | ≤ 0.5% |
| Loss on Drying | ≤ 5.0% |
| Wavelength of Maximum Absorption (λ _{max}) | approx. 595nm |

| | |
|-----------------------|--------------|
| Specification Version | - v1.0 |
| Date Created | - 2017-11-21 |

Glentham Life Sciences confirm that the above referenced product conformed to the information displayed in this document on the quality release date. Please check www.glentham.com or contact us using the details above for the current version of this document.

This document was generated electronically and is therefore valid without signature. © Glentham Life Sciences Ltd, 2024