

## Product Datasheet

### GT2562 - Erioglaucine (C.I. 42090)

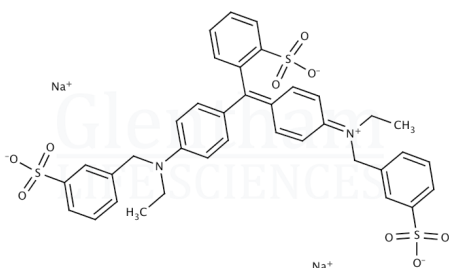
#### Product Details

Product Name	Erioglaucine (C.I. 42090)
Glenthams Code	GT2562
CAS Number	3844-45-9
EINECS	223-339-8
Colour Index	42090
MDL Number	MFCD00012141
PubChem SID	310272632
Related Categories	Dyes & Stains

Physical Description	: Purple to dark purple powder
Solubility (0.1% in water)	: Clear, dark blue or violet solution
Wavelength of Maximum Absorption ( $\lambda_{\text{max}}$ )	: 626.0 - 632.0 nm
Specific Absorption ( $E_{1\%}^{1\text{cm}}$ )	: $\geq 930.0$ (at $\lambda_{\text{max}}$ )
Absorption Ratio ( $\lambda_{\text{max}} \pm 15\text{nm}$ )	: 0.95 - 1.35
Loss on Drying	: $\leq 10.0\%$
Version	: v1.0

#### Structure

Molecular Weight : 792.86  
Molecular Formula :  $\text{C}_{37}\text{H}_{34}\text{N}_2\text{Na}_2\text{O}_9\text{S}_3$



#### About Erioglaucine (C.I. 42090)

No further details on record.

#### Storage

Recommended storage temperature: +20°C.

#### Hazards and Transport

Not classified as hazardous under CLP.  
Not classified as dangerous for transport.

#### Glenthams Product Specification

This document was generated electronically and is therefore valid without signature. © Glenthams Life Sciences Ltd, 2024