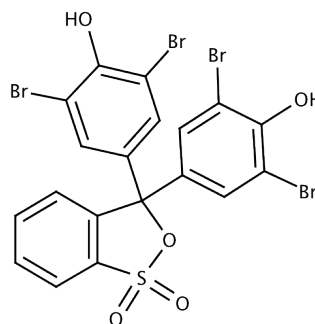


Product Specification

| | |
|-------------------|--|
| Product Name | Bromophenol Blue |
| Glentham Code | GT2874 |
| CAS Number | 115-39-9 |
| EINECS | 204-086-2 |
| MDL Number | MFCD00005875 |
| PubChem SID | 310268950 |
| Molecular Weight | 669.98 |
| Molecular Formula | C ₁₉ H ₁₀ Br ₄ O ₅ S |
| Storage Temp. | +20°C |



| Property | Specification |
|----------------------------------|---|
| Physical Description | Dark beige to dark orange powder |
| pH Transition Range | 3.1 - 4.6 (greenish yellow to blue-violet) |
| Solubility | 0.1% in 95% ethanol: Clear solution |
| Wavelength of Maximum Absorption | 434 - 439 nm (pH 3.1) 590 - 593 nm (pH 4.6) |
| Absorptivity (E1%, 1cm cell) | 350 - 385 (pH 3.1, Lambda 1 max) 940 - 1000 (pH 4.6, Lambda 2 max) |
| Loss on Drying | ≤ 1.0% |

| | | |
|-----------------------|---|------------|
| Specification Version | - | v1.0 |
| Date Created | - | 2014-05-22 |

Glentham Life Sciences confirm that the above referenced product conformed to the information displayed in this document on the quality release date. Please check www.glentham.com or contact us using the details above for the current version of this document.

This document was generated electronically and is therefore valid without signature. © Glentham Life Sciences Ltd, 2021