

## Product Datasheet

### GT3722 - Chlorophenol Red

Pictograms

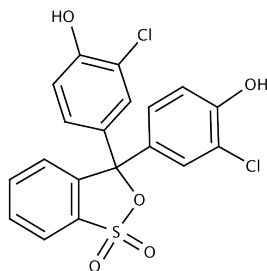


#### Product Details

Product Name	Chlorophenol Red
Glentham Code	GT3722
CAS Number	4430-20-0
EINECS	224-619-2
MDL Number	MFCD00005877
PubChem SID	310270027
Related Categories	Biochemicals, Dyes Stains, Organics, Phenols

#### Structure

Molecular Weight	: 432.28
Molecular Formula	: C <sub>19</sub> H <sub>12</sub> Cl <sub>2</sub> O <sub>5</sub> S



#### Glentham Product Specification

Physical Description	: Red to green, red-brown or brown powder or crystals
Solubility (0.1% in ethanol)	: Clear, orange, dark orange or red-orange solution
pH Transition Range(s)	: 4.6 - 7.3 (yellow to purple)
Wavelength of Maximum Absorption ( $\lambda_{max}$ )	: 573.0 - 577.0 nm (0.1M NaOH)
Absorptivity (1%/1cm)	: $\geq 1500$ ( $\lambda_{max}$ , dried basis)
Loss on Drying	: $\leq 8.0\%$ (1hr at 110 °C)
Assay (spectrophotometry)	: $\geq 90.0\%$
Version	: v1.1

#### About Chlorophenol Red

No further details on record.

#### Storage

Recommended storage temperature: +20°C.

#### Hazards and Transport

Not classified as dangerous for transport.

CLP Classification	Skin Irrit. 2, Eye Irrit. 2, STOT SE 3
Signal Word	Warning
Hazard Codes	H315, H319, H335
Precautionary Codes	P261, P280, P302+P352, P305+P351+P338

This document was generated electronically and is therefore valid without signature. © Glentham Life Sciences Ltd, 2021