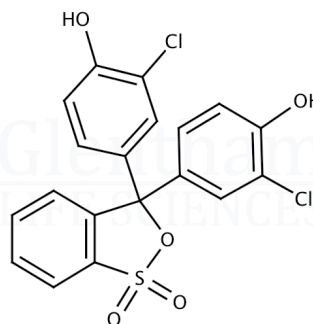


Product Specification

| | |
|---------------|------------------|
| Product Name | Chlorophenol Red |
| Glentham Code | GT3722 |
| CAS Number | 4430-20-0 |
| EINECS | 224-619-2 |
| MDL Number | MFCD00005877 |
| PubChem SID | 310270027 |

| | |
|-------------------|--|
| Molecular Weight | 432.28 |
| Molecular Formula | C ₁₉ H ₁₂ Cl ₂ O ₅ S |
| Storage Temp. | +20°C |



| Property | Specification |
|--|---|
| Physical Description | Red to green, red-brown or brown powder or crystals |
| Solubility (0.1% in ethanol) | Clear, orange, dark orange or red-orange solution |
| pH Transition Range(s) | 4.6 - 7.3 (yellow to purple) |
| Wavelength of Maximum Absorption (λ _{max}) | 573.0 - 577.0 nm (0.1M NaOH) |
| Absorptivity (1%/1cm) | ≥ 1500 (λ _{max} , dried basis) |
| Loss on Drying | ≤ 8.0% (1hr at 110 °C) |
| Assay (spectrophotometry) | ≥ 90.0% |

| | |
|-----------------------|--------------|
| Specification Version | - v1.1 |
| Date Created | - 2020-11-03 |

Glentham Life Sciences confirm that the above referenced product conformed to the information displayed in this document on the quality release date. Please check www.glentham.com or contact us using the details above for the current version of this document.

This document was generated electronically and is therefore valid without signature. © Glentham Life Sciences Ltd, 2024