

Product Datasheet

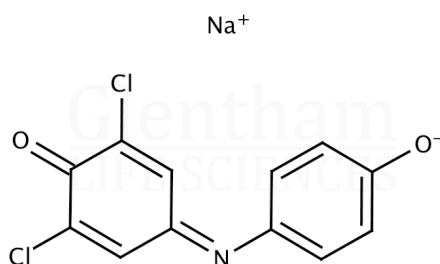
GT5955 - 2,6-Dichloroindophenol sodium salt

Product Details

| | |
|--------------------|--|
| Product Name | 2,6-Dichloroindophenol sodium salt |
| Glenthams Code | GT5955 |
| CAS Number | 620-45-1 |
| EINECS | 210-640-4 |
| MDL Number | MFCD00150014 |
| PubChem SID | 310271480 |
| Additional CAS | 1266615-56-8 ($\cdot xH_2O$) |
| Related Categories | Biochemicals, Dyes & Stains, Organics, Phenols |

Structure

| | |
|-------------------|-------------------------------------|
| Molecular Weight | : 290.08 (anhydrous) |
| Molecular Formula | : $C_{12}H_6Cl_2NNaO_2 \cdot xH_2O$ |



Storage

Recommended storage temperature: +20°C.

Hazards and Transport

Not classified as hazardous under CLP.
Not classified as dangerous for transport.

Glenthams Product Specification

| | |
|--|---|
| Physical Description | : Dark green to black powder |
| Solubility | : 0.1% in 50% ethanol + 1ml 1N Na ₂ CO ₃ : Clear, blue solution |
| Wavelength of Maximum Absorption (λ_{max}) | : Reported |
| Absorptivity (1%/1cm) | : Reported (at λ_{max}) |
| Loss on Drying | : $\leq 12.0\%$ (120°C) |
| Interfering Dyes | : To pass test |
| Version | : v1.0 |

About 2,6-Dichloroindophenol sodium salt

2,6-Dichloroindophenol sodium salt is an organic redox dye. It is blue when oxidised and colourless when reduced. It is commonly used for vitamin C determination.