

Product Datasheet

GT6539 - Crystal Ponceau 6R (C.I. 16250)

Product Details

Product Name	: Crystal Ponceau 6R (C.I. 16250)
Glenthams Code	: GT6539
CAS Number	: 2766-77-0
EINECS	: 220-441-4
MDL Number	: MFCD00013279
Colour Index	: 16250
PubChem SID	: 310270558
Related Categories	: Dyes Stains, Raw Materials (IVD)

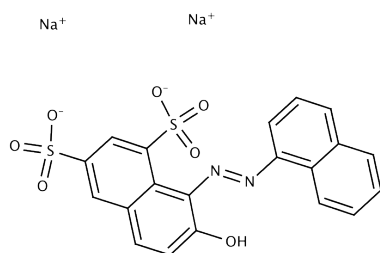
Physical Description	: Dark red to dark brown powder
Solubility (0.1% in water)	: Clear, red solution
Melting Point	: $\geq 300^{\circ}\text{C}$
Wavelength of Maximum Absorption (λ_{max})	: 509 - 514 nm (in water)
Loss on Drying	: $\leq 20.0\%$
Dye Content	: $\geq 75\%$
Version	: v1.0

About Crystal Ponceau 6R (C.I. 16250)

No further details on record.

Structure

Molecular Weight	: 502.43
Molecular Formula	: C ₂₀ H ₁₂ N ₂ Na ₂ O ₇ S ₂



Storage

Recommended storage temperature: +20°C.

Hazards and Transport

Not classified as hazardous under CLP.
Not classified as dangerous for transport.

Glenthams Product Specification

This document was generated electronically and is therefore valid without signature. © Glenthams Life Sciences Ltd, 2019